

 4 bedrooms  2.5 bathrooms  Double Garage  218.30 Sq M



BURGOS

INCLUSIONS:

Fixed site cost and BASIX;
2600 mm ceiling ground floor;
Ducted air conditioner;
Down-light package to
Kitchen/Living;
Caeserstone kitchen bench top;
Carpet to bedrooms;
Tiles to Living areas;
Mirrored Sliding robes;
Clothes line and Letter box;
Turf front and backyard;
Colored driveway;
Six months completion;



KEY FACTS

- ✓ Double storey
- ✓ 4 bedrooms
- ✓ 2.5 bathrooms
- ✓ Double Garage
- ✓ 218.30 Sq M
- ✓ Exterior width 10.38m
- ✓ Exterior length 14.13m

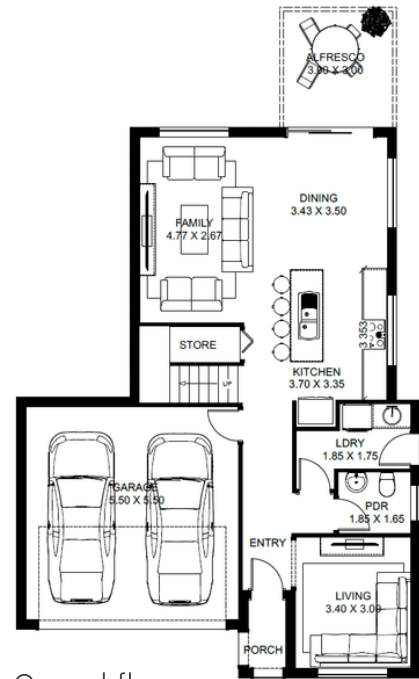
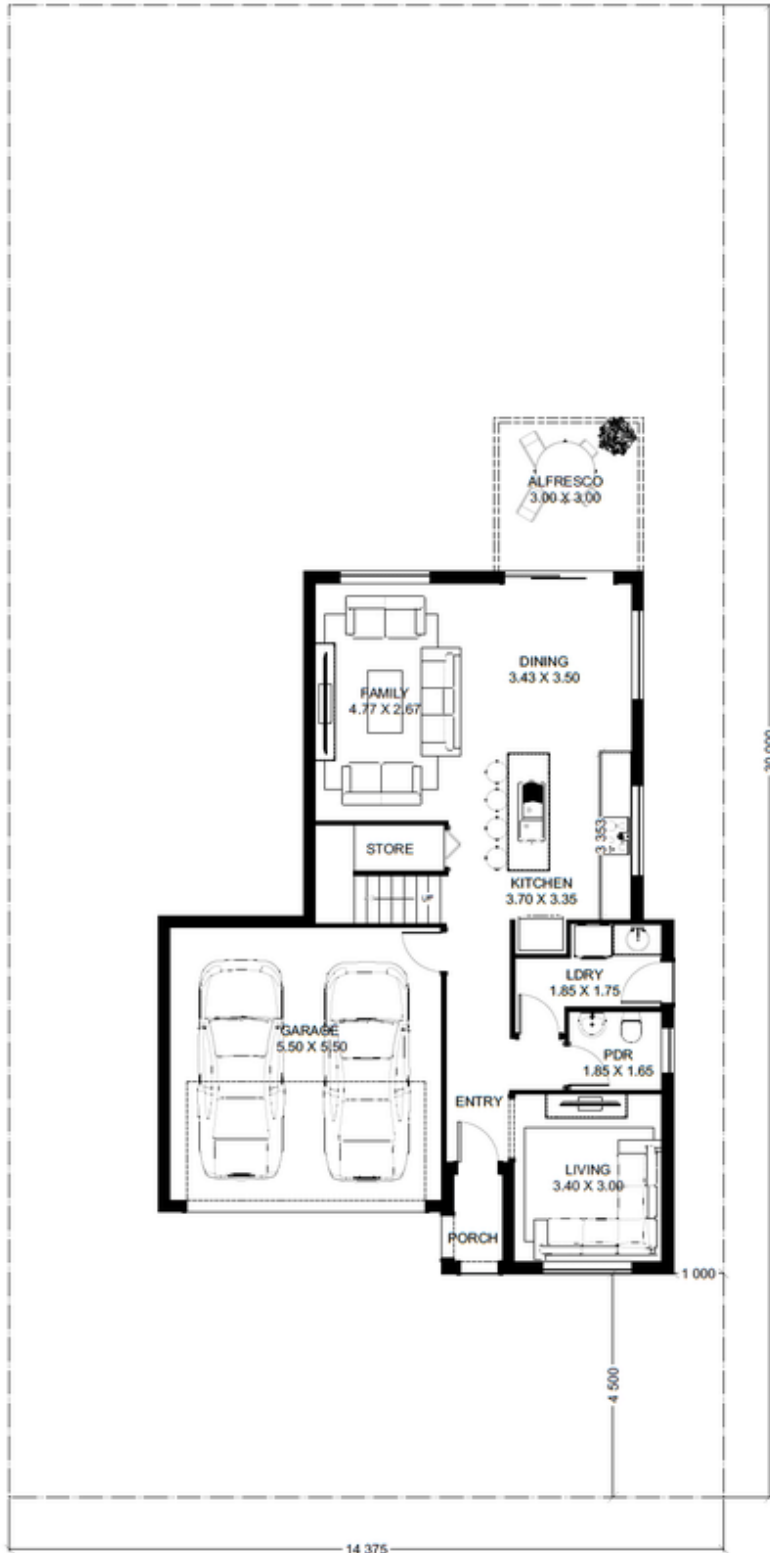
HOUSE SIZE: 218.30 M²
LAND SIZE: 431.20 M²

FLOOR AREAS

Ground Floor	114.88 sqm
First floor	94.42 sqm
Alfresco	9.00 sqm

Total Floor Area 218.30 sqm

LAND SIZE: 431.20 SQM



Ground floor



FIRST FLOOR

